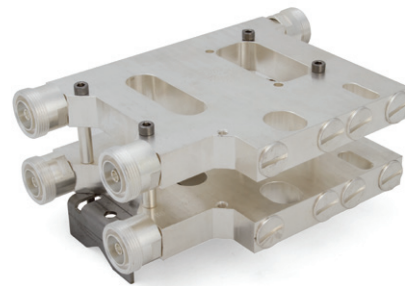
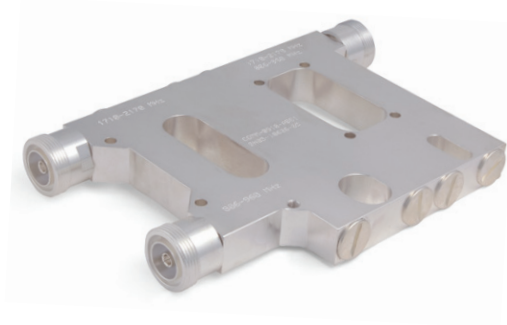


# Diplexer

806 - 960 and 1710 - 2170 MHz



## PRODUCT FEATURES

- Low insertion loss
- No soldered parts
- Made of silver-plated brass
- Mounting on wall or on poles in various dimensions
- No need for tape or other external weatherproofing
- DC and AISG Issue 2.0 Passthru on selected ports
- IP68-classified and water-pressure proof tested down to 25 m

## PRODUCT PROFILE

Exir Telecom's diplexer has been developed to keep inter-modulation products at the lowest possible level. The filter is milled from one solid piece and has no soldered parts.

ELECTRICAL CHARACTERISTICS	
COMMON FOR ALL	
<b>FREQUENCY RANGE</b>	806 - 960 MHz 1710 - 2170 MHz
<b>INPUT POWER</b>	400 W
<b>INTERMODULATION</b>	
2 x 20 W transmitter	< -156 dBc
<b>IMPEDANCE</b>	50 ohm
<b>VSWR / RETURN LOSS</b>	1.22 / -20 dB
<b>INSERTION LOSS</b>	< 0.2 dB
<b>ISOLATION</b>	
806 - 960, 1710 - 2170 MHz	> 40 dB
820 - 960, 1710 - 2170 MHz	> 50 dB
<b>CONNECTORS</b>	DIN 7/16 female

	DC-PASS ON ALL PORTS	DC-BLOCK ON 806-960 MHz
<b>DIPLEXER</b>	<b>COMM-0918-AB01</b>	<b>COBL-0918-AA00</b>
<b>WEIGHT</b>	2100 g (4.6 lb)	2100 g (4.6 lb)
<b>DIMENSIONS</b>	210 x 140 x 22 mm H x W x D (8.27 x 5.51 x 0.87 in)	210 x 140 x 22 mm (8.27 x 5.51 x 0.87 in)
<b>DIPLEXER W. BRACKET</b>	<b>COMM-0918-AD00</b>	<b>COBL-0918-AD00</b>
<b>WEIGHT</b>	2400 g (5.3 lb)	2400 g (5.3 lb)
<b>DIMENSIONS</b>	210 x 140 x 32 mm H x W x D (8.27 x 5.51 x 1.26 in)	210 x 140 x 32 mm (8.27 x 5.51 x 1.26 in)
<b>DUAL DIPLEXER W. BRACKET</b>	<b>COMM-0918-AC00</b>	<b>COBL-0918-AC00</b>
<b>WEIGHT</b>	4500 g (9.9 lb)	4500 g (9.9 lb)
<b>DIMENSIONS</b>	210 x 140 x 80 mm H x W x D (8.27 x 5.51 x 3.15 in)	210 x 140 x 80 mm (8.27 x 5.51 x 3.15 in)